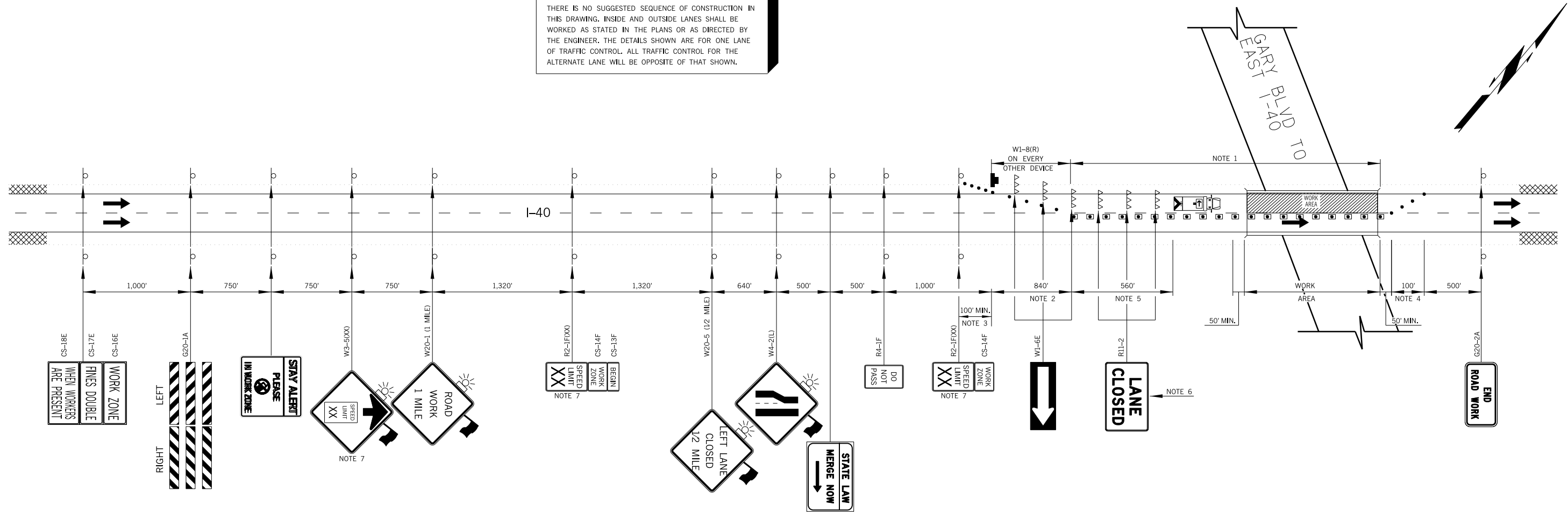


THERE IS NO SUGGESTED SEQUENCE OF CONSTRUCTION IN THIS DRAWING. INSIDE AND OUTSIDE LANES SHALL BE WORKED AS STATED IN THE PLANS OR AS DIRECTED BY THE ENGINEER. THE DETAILS SHOWN ARE FOR ONE LANE OF TRAFFIC CONTROL. ALL TRAFFIC CONTROL FOR THE ALTERNATE LANE WILL BE OPPOSITE OF THAT SHOWN.



NOTE 1
 MAXIMUM SPACING BETWEEN CHANNELIZING DEVICES (FEET) SHALL BE TWICE THE POSTED SPEED LIMIT (M.P.H.) WITH THE FOLLOWING EXCEPTIONS. SPACING SHALL NOT EXCEED 50 FEET FOR CONES OR TUBE CHANNELIZERS. SPACING SHALL NOT EXCEED 75 FEET FOR CHANNELIZER CONES. SPACING SHALL NOT EXCEED 100 FEET FOR TYPE II BARRICADES, VERTICAL PANELS OR DRUMS.

NOTE 2
 MAXIMUM SPACING BETWEEN CHANNELIZING DEVICES (FEET) SHALL BE EQUAL TO THE POSTED SPEED LIMIT (M.P.H.) WITH THE FOLLOWING EXCEPTIONS. SPACING SHALL NOT EXCEED 25 FEET FOR CONES OR TUBE CHANNELIZERS. SPACING SHALL NOT EXCEED 50 FEET FOR TYPE II BARRICADES, VERTICAL PANELS OR DRUMS.

NOTE 3
 A MINIMUM OF FIVE (5) CHANNELIZING DEVICES SHALL BE PLACED THROUGH THIS TAPER.

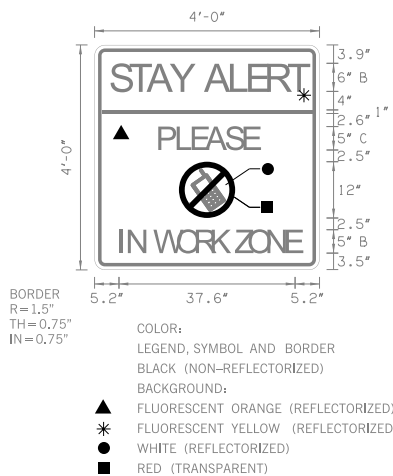
NOTE 4
 DOWNSTREAM TAPERS SHALL CONTAIN A MINIMUM OF FOUR (4) CHANNELIZING DEVICES.

NOTE 5
 A LONGITUDINAL BUFFER AREA, TO ALLOW WORKERS TIME TO EVACUATE THE WORK AREA, SHOULD BE PROVIDED. FOR GUIDELINES ON SETTING THE LENGTH OF THIS BUFFER, SEE STANDARD DRAWING TCS2-1-(LATEST REVISION). ACTUAL LENGTH SHALL BE DETERMINED BY FIELD CONDITIONS AND THE JUDGEMENT OF THE ENGINEER.

NOTE 6
 TYPE III BARRICADES WITH SIGNS READING "LANE CLOSED" (R1-2) SHALL BE PLACED EVERY 2,000 FEET THROUGH ACTIVITY AREA. THESE TYPE III BARRICADES AND SIGNS MAY BE OMITTED ON MOVING OPERATIONS AND SHORT DURATION PROJECTS.

NOTE 7
 CONSTRUCTION SPEED LIMIT TO BE DETERMINED BY THE DIVISION ENGINEER.

FOR ADDITIONAL INFORMATION ABOUT TAPER LENGTHS AND SPACING OF CHANNELIZING DEVICES, SEE STANDARD DRAWING TCS2-1-(LATEST REVISION).



OUTSIDE LANE CLOSURE IS THE REVERSE OF INSIDE. ADVANCE SIGNS SHALL REFLECT CORRECT LANE CLOSURE.

SAME TRAFFIC CONTROL TO BE USED FOR BOTH EASTBOUND AND WESTBOUND CLOSURES.

- KEY:**
- SIGN
 - DRUM
 - ◻ CHANNELIZING CONE
 - ▨ WORK AREA
 - ➔ ARROW DISPLAY
 - 🚚 SHADOW VEHICLE
 - 🚚 TRUCK MOUNTED ATTENUATOR
 - ▲▲▲ TYPE III BARRICADES

NOT TO SCALE

1-40 BRIDGE OVER GARY BLVD.		
Drawn	SRW	6/16
Design	SEB	6/16
Checked	JLS	6/16
TRAFFIC ENGINEERING JAMI SHORT		
STATE OF OKLAHOMA		DEPARTMENT OF TRANSPORTATION
DIVISION 5	JOB/PIECE NO. 31700(04)	SHEET NO. T002